

wirral
vikings



wirral vikings

Wirhalh Skip Felagr - The Wirral Ship Fellowship

skjoldehamn hood

Construction of a basic Skjoldehamn Hood

V1.0 – 12.11.2024

© Wirral Vikings 2024 – Illustrations by Andrew Quick



This guide will show you how to make a basic Skjoldehamn Hood.

measurements

We first need to take some measurements.

A) Front and rear squares - Measure from your Adams Apple notch to the point on your chest that you want your hood to finish. This measurement is the diagonal of the inserted squares. You can calculate the side lengths of the square by using Pythagoras - $A1^2 = A2^2 + A3^2$

B) Hood front edge - Measure from your Adams Apple notch around the top of your head and back to your Adams Apple notch to represent the front edge of your hood.

C) Full material length - Use the calculation $(2 \times A2) + B = C$. Add seam allowances and cut out CxD, and two of the A sections

D) Head circumference - Measure around your head and find the smallest diameter that you can slide over your head comfortably. Divide this number by 2 and add seam allowances.

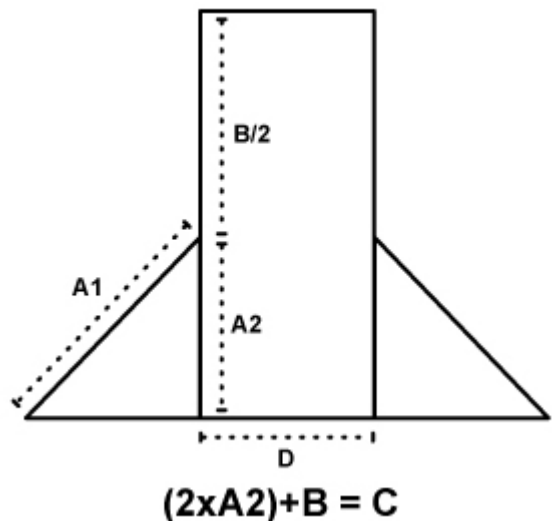
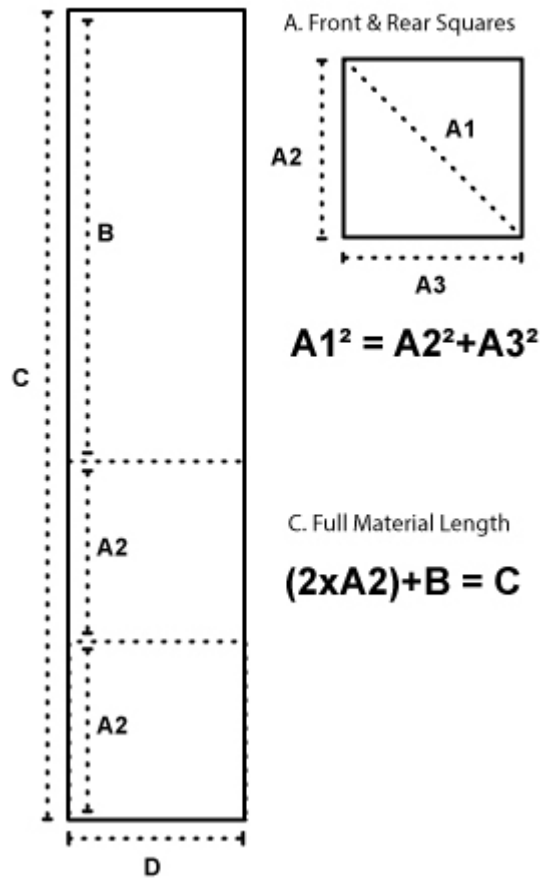
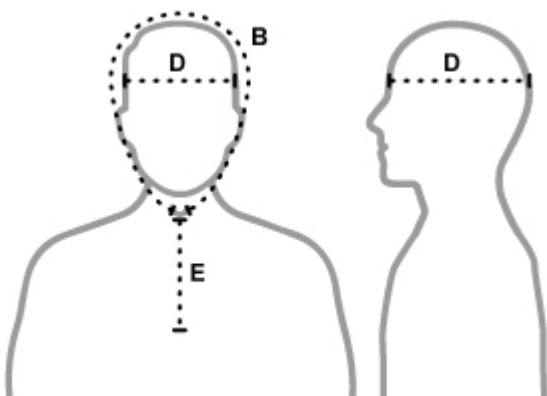
reference:

a=

b=

c=

d=



Please Note:

Depending on whether you prefer to work in inches or centimetres, add 5/8" or 1.5cms on **EVERY** seam edge as a "seam allowance"



templates

If you are confident in cutting your material straight away you could skip this section but if like use some greaseproof paper to make templates.

Templates are a good what to check that you have measured yourself accurately. There is nothing worse than cutting your material only to realise you have not measured correctly

Template also allow you to make sure you use you material in a most efficient way with little waste.

Using you templates will allow you to correct any mistakes or miscalculations.

Check and recheck your measurements till you are happy to proceed.

making the hood

Putting all the elements together to make your Skjoldehamn Hood

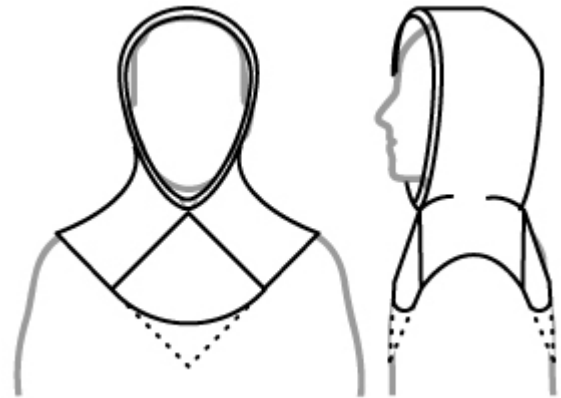
Take all of your pieces and pin them together according to the illustrations. This will give you a rough layout of the final hood and allow you to carefully try it. (Careful of the pins).

Attach one corner of the square to the corner of the rectangle. Sew the full length of the square. (This is your A2 by A3 square and your C by D rectangle of material).

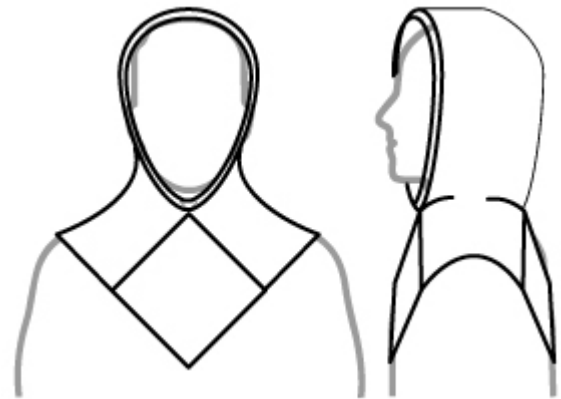
Then sew the other length of the square to the other end of the large rectangle. (So your C length will be folded in half and it is this part that is sewn to the other length of the A2 by A3 square material. length will be folded in half and it is this part that is sewn to the other length of the A2 by A3 square material.

If this will be the back of your hood. On the bottom points of the squares sew a curve into the bottom edges.

Leaving this part as a point is more 11th Century.



10th Century



11th Century

Once sewn move round to the front side. Use the other square to make the front face opening. Attach one corner of the square to the corner of the rectangle.

Sew the full length of the square.

This is your A2 by A3 square and your C by D rectangle of material like you have done previously but this time do not sew the B section as this is where your face will go.